



7 Product Specification

Sensor Type	High resolution acetone gas sensor
Display Unit	PPM(Parts Per Million)
Measurement Range	OPPM ~ 40PPM
Accuracy	Less than 5ppm: +/-0.5ppm On or above 5ppm: +/-10%
Battery	1.5V AAsize alkaline battery 2pcs
Analyzing Time	Within 5 seconds
Mouthpiece	Provided disposable mouthpiece or Standard drinking straw (0.7cm or 0.28 Inch Diameter)
Sensor Replacement Cycle	300 measurements
Storage Temperature	5°C ~ 50°C (41°F to 122°F)
Operational Temperature	10°C ~ 40°C(50°F to 104°F)
Certificate	FCC, CE, FDA Class 1

8 Sensor Replacement Service

The sensor replacement service, which is calibrated after replaced as completely new sensor, is a special care solution that allows you to manage the device as if it is new for a long time while reducing the cost of replacing the entire device.
If the unit displays  and , Please contact your nearest Service Center or the purchasing store to apply for the Service.



FCC compliance information

THIS DEVICE COMPLIES WITH PART 15 OF THE FCC RULES.

Operation is subject to the following two conditions:

(1) This device may not cause harmful interference, and

(2) This device must accept any interference received, including interference that may cause undesired operation.
Note: This equipment has been tested and found to comply with the limits for a Class B digital device, pursuant to part 15 of the FCC Rules. These limits are designed to provide reasonable protection against harmful interference in a residential installation. This equipment generates, uses, and can radiate radio frequency energy and, if not installed and used in accordance with the instructions, may cause harmful interference to radio communications. However, there is no guarantee that interference will not occur in a particular installation.

If this equipment does cause harmful interference to radio or television reception, which can be determined by turning the equipment off and on, the user is encouraged to try to correct the interference by one or more of the following measures:

- Reorient or relocate the receiving antenna.
- Increase the separation between the equipment and receiver.
- Connect the equipment into an outlet on a circuit different from that to which the receiver is connected.
- Consult the dealer or an experienced radio/TV technician for help.

Modifications not expressly approved by the manufacturer may void the user's authority to operate the equipment under FCC rules.

Limited ONE year warranty

Warranty coverage

Sentech GMI Corp, warrants this product against defects in materials and workmanship under normal use for a period of ONE(1) YEAR from the date of retail purchase by the original end-user purchaser("Warranty Period"). Except as provided in the preceding sentence or applicable law, Sentech GMI Corp, provides this product "as is". If a defect arises and a valid claim is received by Sentech GMI Corp, within the Warranty Period, at its option, Sentech GMI Corp, will either (1) repair the product, (2) exchange the product with a product that is new or which has been manufactured from new or serviceable used parts and is at least functionally equivalent to the original product, or (3) refund the purchase price of the product. When a refund is given, the product for which the refund is provided must be returned to Sentech GMI Corp, or Seller and becomes Sentech GMI Corp, or Seller property. This warranty is limited to the original end-user purchaser and is not transferable to, or enforceable by, any subsequent owner.

No Sentech GMI Corp reseller, agent, or employee is authorized to make any modification, extension, or addition to this warranty. If any term is held to be illegal or unenforceable, the legality or enforceability of the remaining terms shall not be affected or impaired.

EXCEPT AS PROVIDED IN THIS WARRANTY AND TO THE MAXIMUM EXTENT PERMITTED BY LAW, Sentech GMI Corp IS NOT RESPONSIBLE FOR DIRECT, SPECIAL, INCIDENTAL OR CONSEQUENTIAL DAMAGES UNDER ANY LEGAL THEORY, INCLUDING BUT NOT LIMITED TO LOSS OF USE; LOSS OF REVENUE OR INCOME; LOSS OF ACTUAL OR ANTICIPATED PROFITS (INCLUDING LOSS OF PROFITS FROM A CONTRACT); LOSS OF THE USE OF MONEY; LOSS OF ANTICIPATED SAVINGS; LOSS OF BUSINESS; LOSS OF OPPORTUNITY; LOSS OF GOODWILL, OR LOSS OF REPUTATION.

Some countries, states and provinces do not allow the exclusion or limitation of incidental or consequential damages or allow limitations on how long an implied warranty or condition may last, so the above limitations or exclusions may not apply to you. This warranty gives you specific legal rights, and you may also have other rights that vary by country, state or province. This Limited Warranty is governed by and construed under the laws of the country in which the product purchase took place.

For warranty & technical service Please contact;

SENTECH GMI

SENTECH GMI Corp, 722 K-Square 161 Yanghwa-ro Mapo-gu
Seoul Republic of Korea 03995

Tel: +82 2 6929 1310

www.ketoscan.com

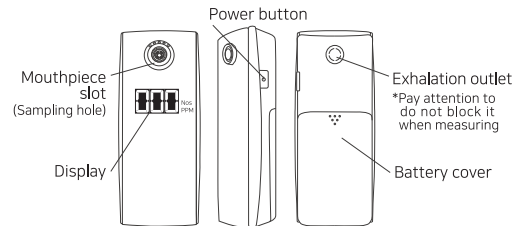
sales@sentechgmi.com

User's Manual KETOSCAN LITE

1 Components

KETOSCAN LITE, AA battery(2), mouthpiece(3), User's Manual

2 Product Description



3 Precautions

- The operation of this device is stopped when measurement is reached to 300 tests. If the device is not working, please Contact your nearest Service Center at the "Service Center" menu on the KETOSCAN Lite app or the place of purchase.
- There can be influence to the results when drink beverage such as coffee, juice and so on excluding water and eat food or smoke or brushed the teeth (Including mouthwash) within 30 minutes before the measurement.
- The alcohol content can influence to the results when drink within 24 hours or a hangover do last.
- The precision of sensor can be decreased when do not use this device more than 6 months ~ 1 year. Please contact with service center near your location at the "Service Center" menu in the KETOSCAN Lite app or the purchasing store.

4 Display Message

b l o Start to blow

Blow into the mouthpiece(or drinking straw) until the unit vibrated.

S d f Self-Diagnostic test Completed

Wait few seconds for the main test.

S E n Sensor replacement required(Blocked to operate)

The unit has measured 300 tests, so sensor replacement. service is needed to maintain an accurate result. Please contact your nearest Service Center or the purchasing store to apply for the Service.

b A t Low Battery Warning

Replace AA Alkaline batteries to a new one.

E r . 2 Sensor error

The sensor has defected. Please contact your nearest Service Center or the purchasing store to apply for the Service.

5 How to use

- ①Put a mouthpiece(or drinking straw) on a sampling hole. Press and hold the power button for 2 seconds to turn the unit on.
- ②The available number of tests and the previous test results will be toggled on the screen.
- ③Wait until showing **b l o** on the screen then start to blow continuously until the unit vibrated. **S d f** will be displayed as the self- diagnostic testing is completed. Count down again, and then the unit requests you to blow one more time for the main test. Blow continuously until the unit vibrated.
- ④The test result will be displayed and turns off in 15 seconds automatically.
- ⑤To turn the unit off forcibly, press and hold the power button for 2 seconds.

·What is 'Self-diagnostic test'?

Self-diagnosis function is a patented technology only for KETO SCAN cleaning the sensor using the exhaled gas(Breath) of the user when there are lots of miscellaneous gases surrounding the sensor. The number of available tests is not deducted because it is the preparation stage of precise main measurement.

·Recall data on the unit

Turn the unit on, then press the power button once when the screen displays **S . R . R** The available number of testing and the latest testing result will be toggled on the screen.

·Make your own keto logbook

Input your readings, take a picture and track your data on KETOSCAN LITE mobile App.

Available on the Google play store and the App store.

·Sync your fitness/calorie counter app with the KETOSCAN Lite app.

The information you enter into your Google Fit, Apple Health and FatSecret will automatically sync into the KETOSCAN Lite app.

Sync with	To recall my
Google Fit	Weight, Calories consumed
Apple Health	Weight, Calories burned/consumed
FatSecret	Weight, Calories burned/consumed and macronutrients ratio

6 Level Guide

KETOSCAN Lite measures your breath acetone concentration in PPM(Parts Per Million). Refer to the below chart to track your level, bodyfat burning rate based on your acetone reading.

Ketosis State	Level	Acetone Reading	Bodyfat burning rate
No or Low	LEVEL 0	0 ppm	0.00 oz/hour
	LEVEL 1	1 ppm	0.00 oz/hour
You are not in ketosis.			
Beginning	LEVEL 2	2 ppm	0.05 oz/hour
	LEVEL 3	3 ppm	0.08 oz/hour
	LEVEL 4	4 ppm	0.11 oz/hour
You are at early stage of ketosis.			
Stable	LEVEL 5	5 ppm	0.13 oz/hour
	LEVEL 6	6 ppm	0.16 oz/hour
	LEVEL 7	7 ppm	0.19 oz/hour
	LEVEL 8	8 ppm	0.21 oz/hour
	LEVEL 9	9 ppm	0.24 oz/hour
You are at a stable level of ketosis.			
Optimal	LEVEL 10	10 ~ 40 ppm	0.25 oz/hour
	You are in an optimum level of ketosis.		

·The maximum acetone reading on the unit is 40ppm, and it will be blinking if your reading is above than 40ppm.